

Module 4 LO4

Bones Anatomy

Dr. Lisa Brinn

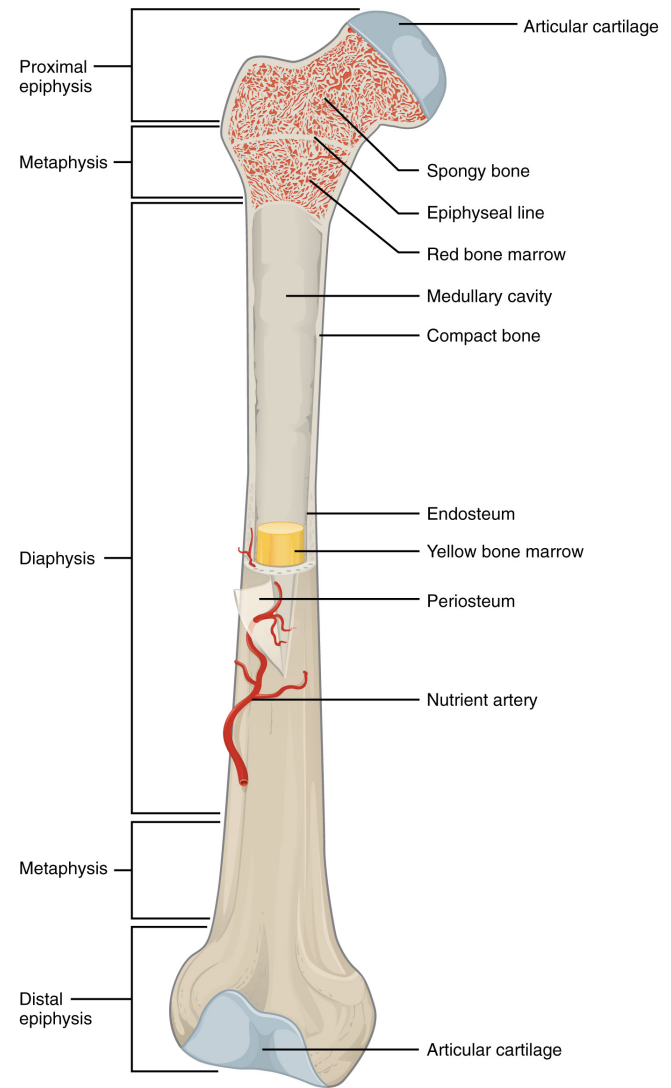
lbrinn@fiu.edu

[Module 4 MLO4 Video Bone Anatomy](#)

4. Bone Anatomy

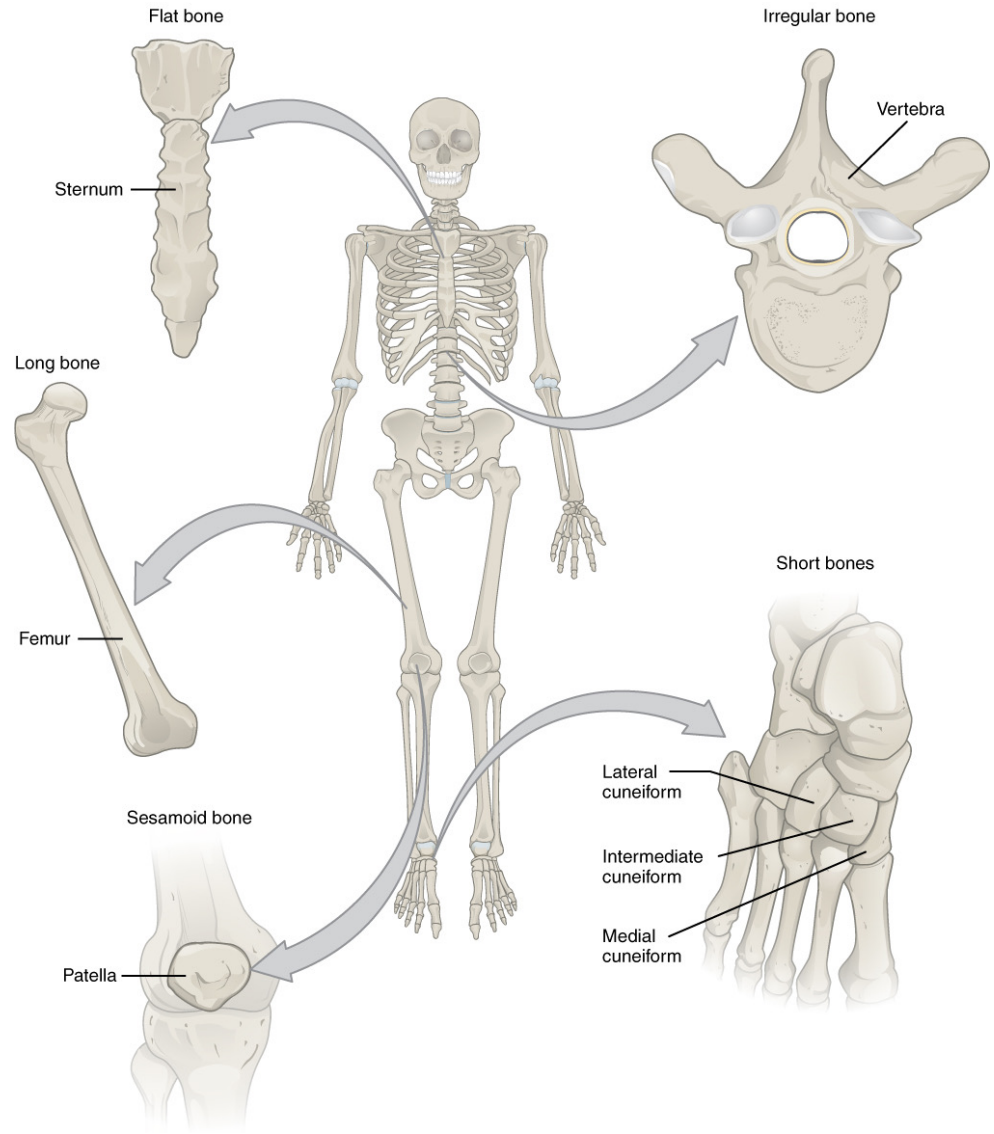
1. Diaphysis
2. Epiphyses
3. Metaphysis
4. Articular cartilage
5. Periosteum
6. Medullary cavity
7. Endosteum

Long Bone Anatomy



Types of Bones

- A. Long bones
- B. Short bones
- C. Flat bones
- D. Irregular bones
- E. Sesamoid bones
- F. Pneumatized bones
- G. Sutural bones



A. Long Bones



Clavicle



Femur



Fibula and Tibia



Radius and Ulna

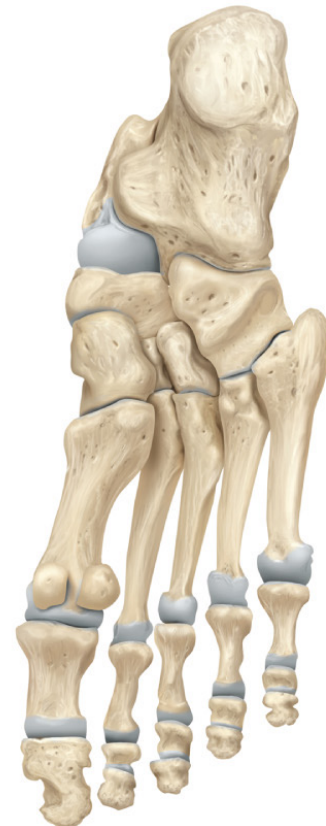


Humerus

B. Short Bones

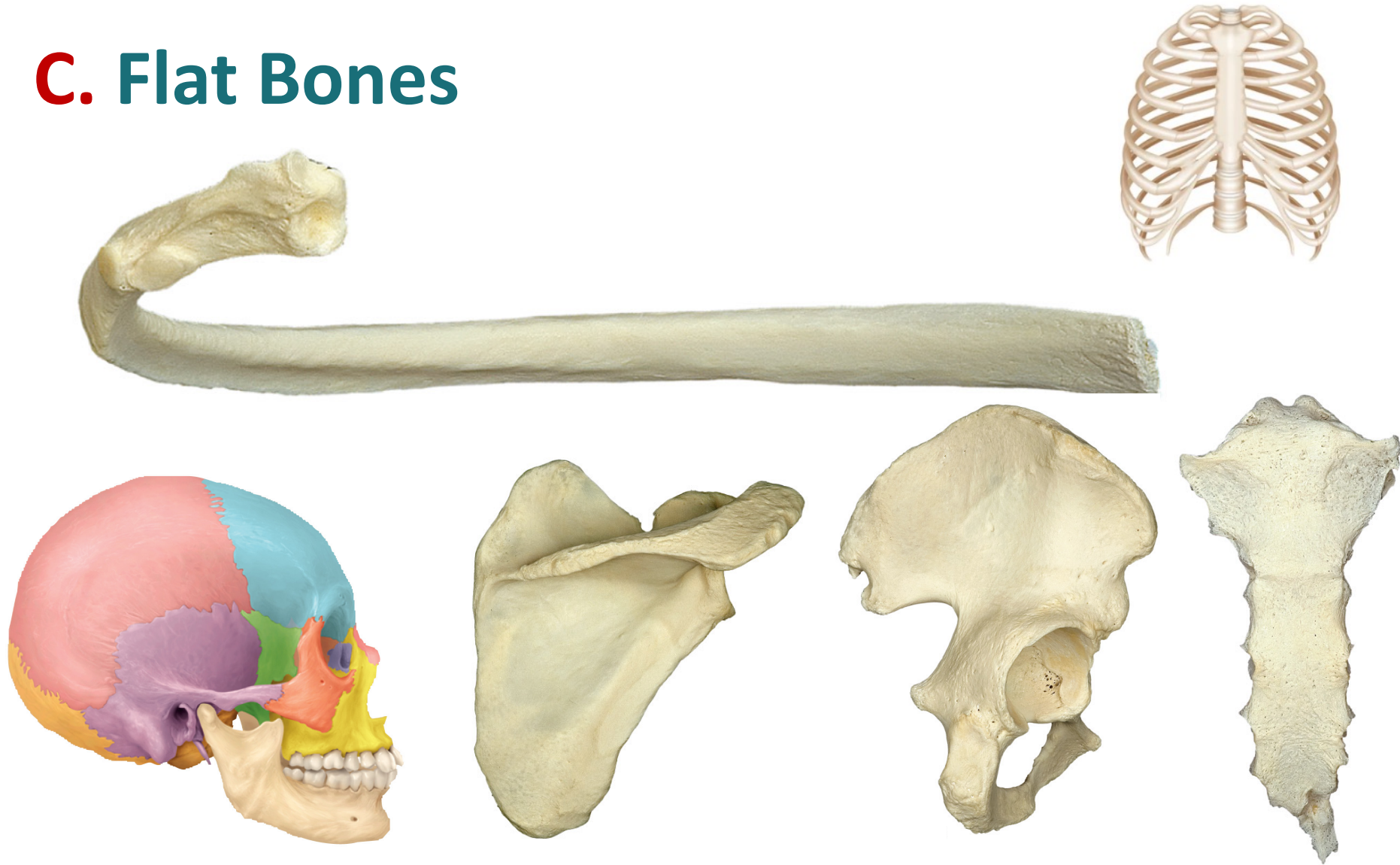


Hand

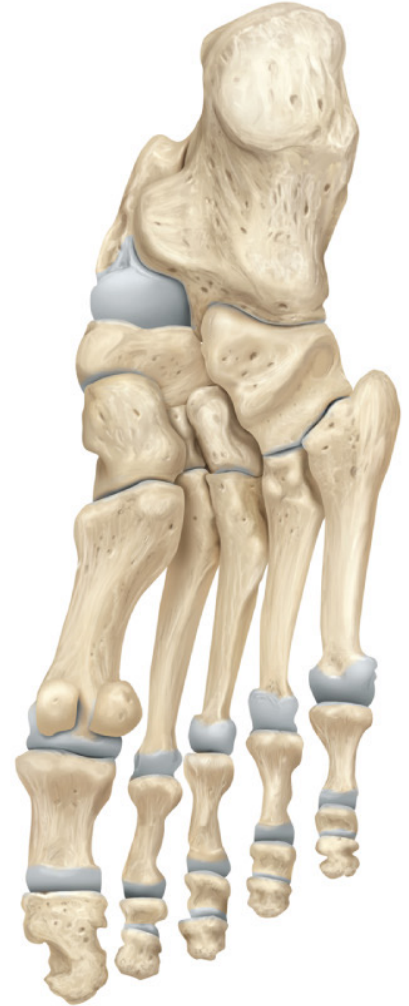
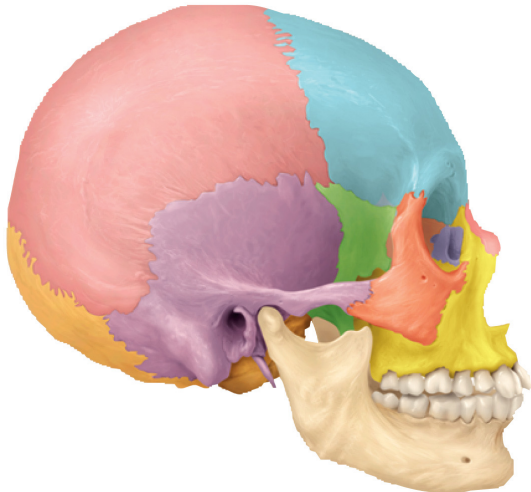


Foot

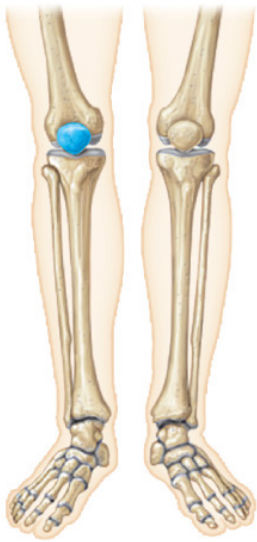
C. Flat Bones



D. Irregular Bones



E. Sesamoid Bones



F. Pneumatized Bones

Bones with pockets



G. Sutural Bones

